



135 S. LaSalle St. | Suite 3000  
 Chicago, IL 60603  
 312-492-4200  
 www.ricedairy.com

Monday • March 28, 2016

# China Dairy Data Report

By Yuyang Zhang • yuz@ricedairy.com



## HIGHLIGHTS

### December 2015 China Dairy Production

- Drinking Milk (+7.8%)
- Milk Powders (-0.4%) [including SMP, WMP and Infant Formula]

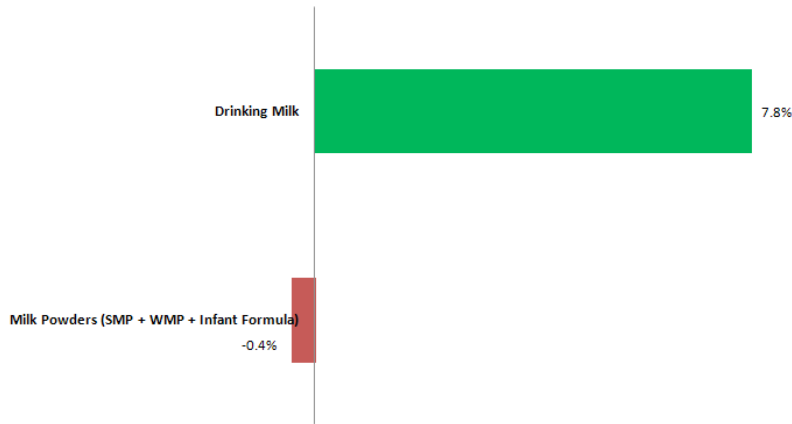
### February 2016 China Import

- SMP (+0.7%)
- WMP (-26.1%)
- Whey Powder (+18.5%)
- Cheese (+54.8%)
- Infant Formula (+37.7%)

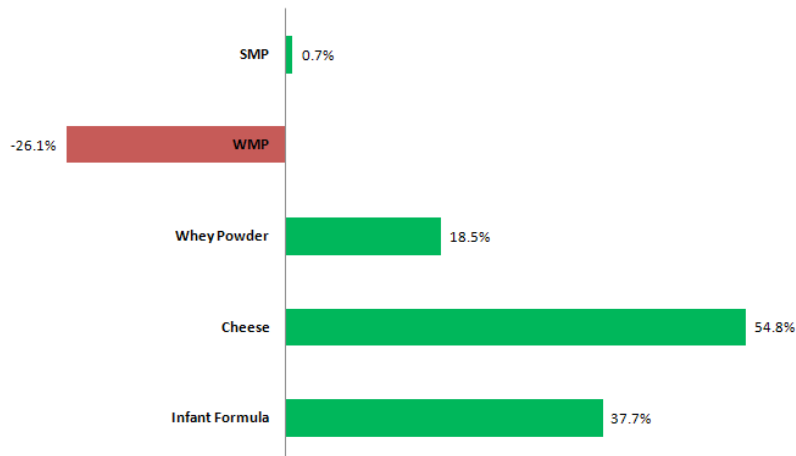
### Note:

2016 dairy production data publication is delayed.

**December 2015 China Dairy Production (YoY %)**

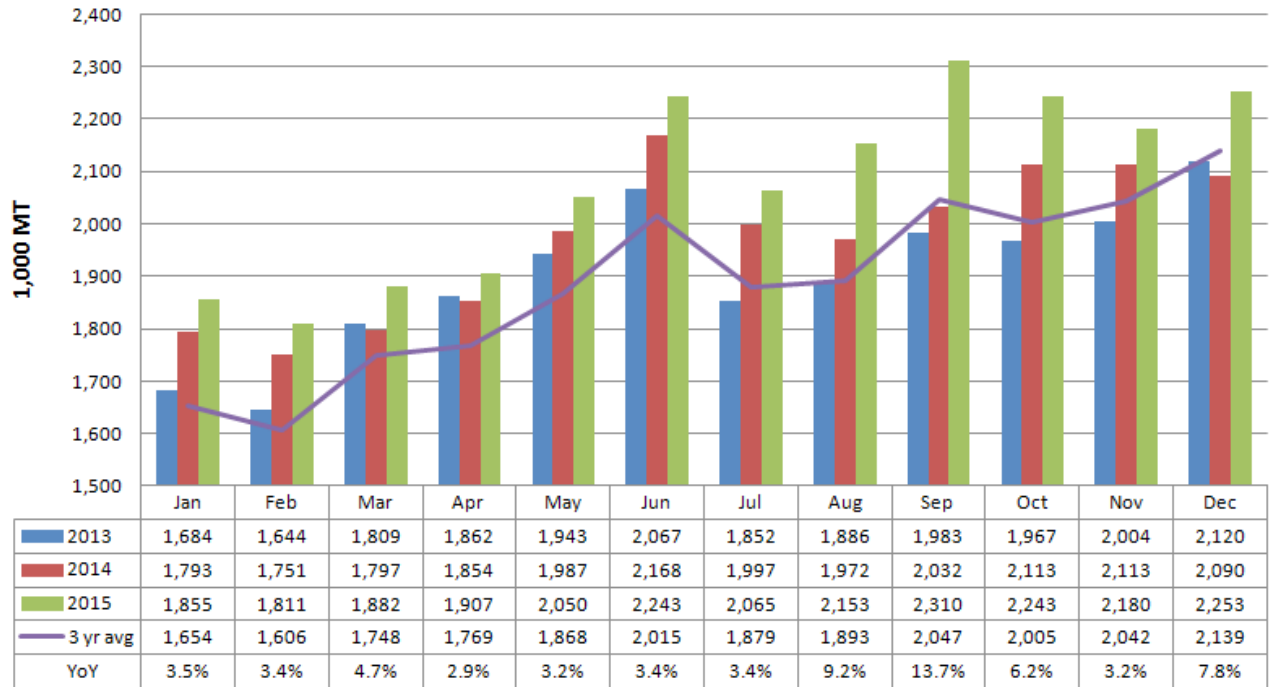


**February 2016 China Import (YoY %)**

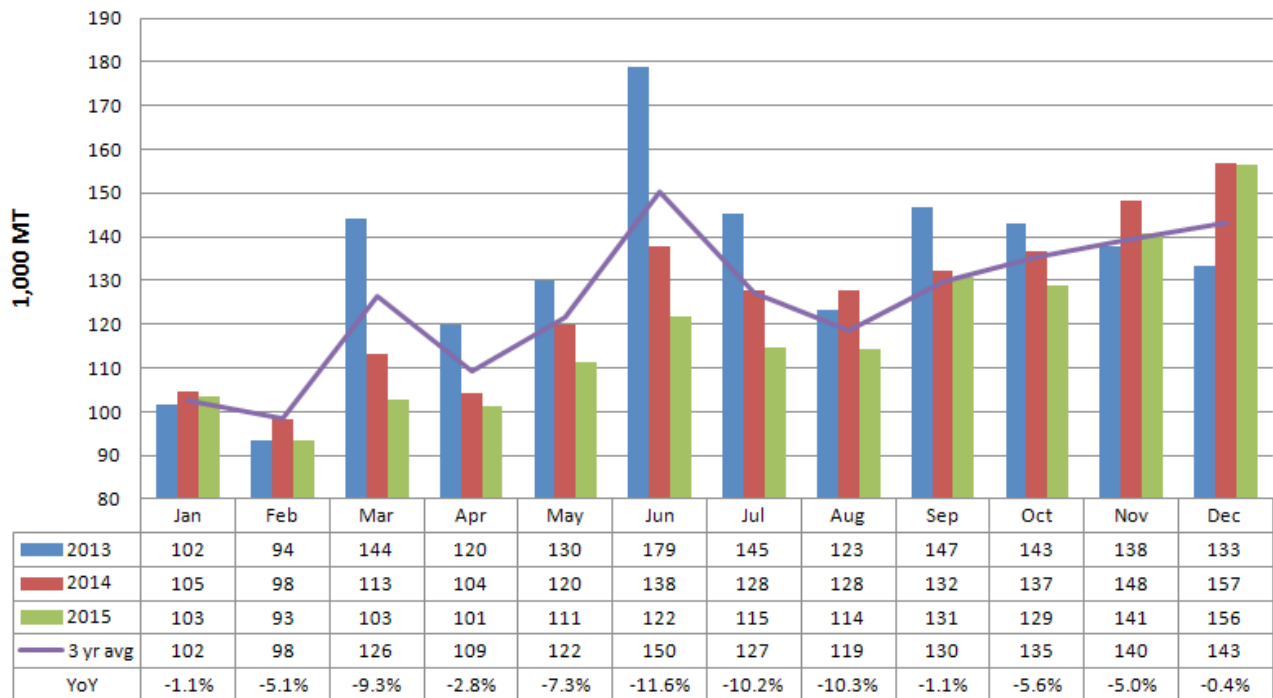


# DECEMBER CHINA DAIRY PRODUCTION

## China Drinking Milk Production



## China Milk Powders Production (SMP + WMP + Infant Formula)



# — FEBRUARY CHINA SMP IMPORT —

## SMP Highlights:

China imported 17,472 MT SMP/NFDM in Feb, up +0.7% YOY.

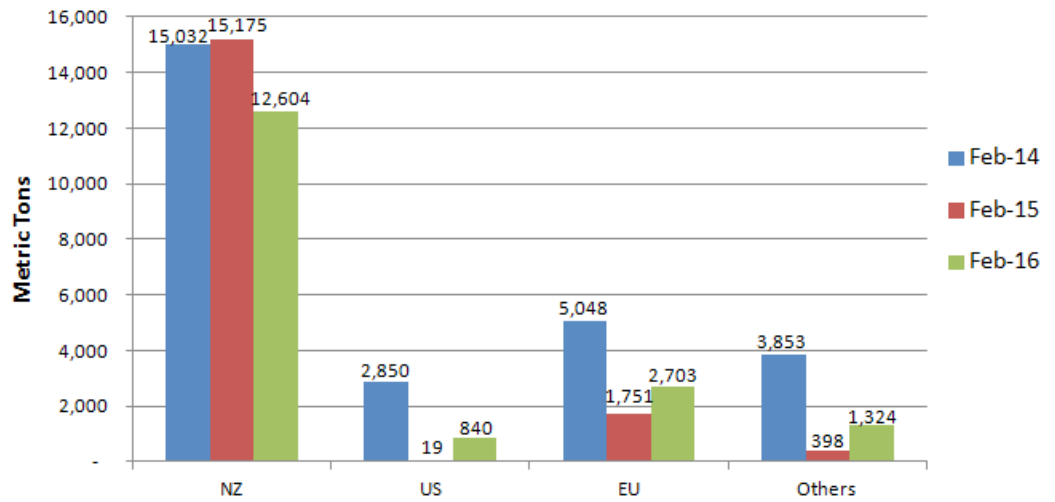
### YoY

- NZ: -2,571 MT, -17%
- US: +822 MT, +4370%
- EU: +953 MT, +54%

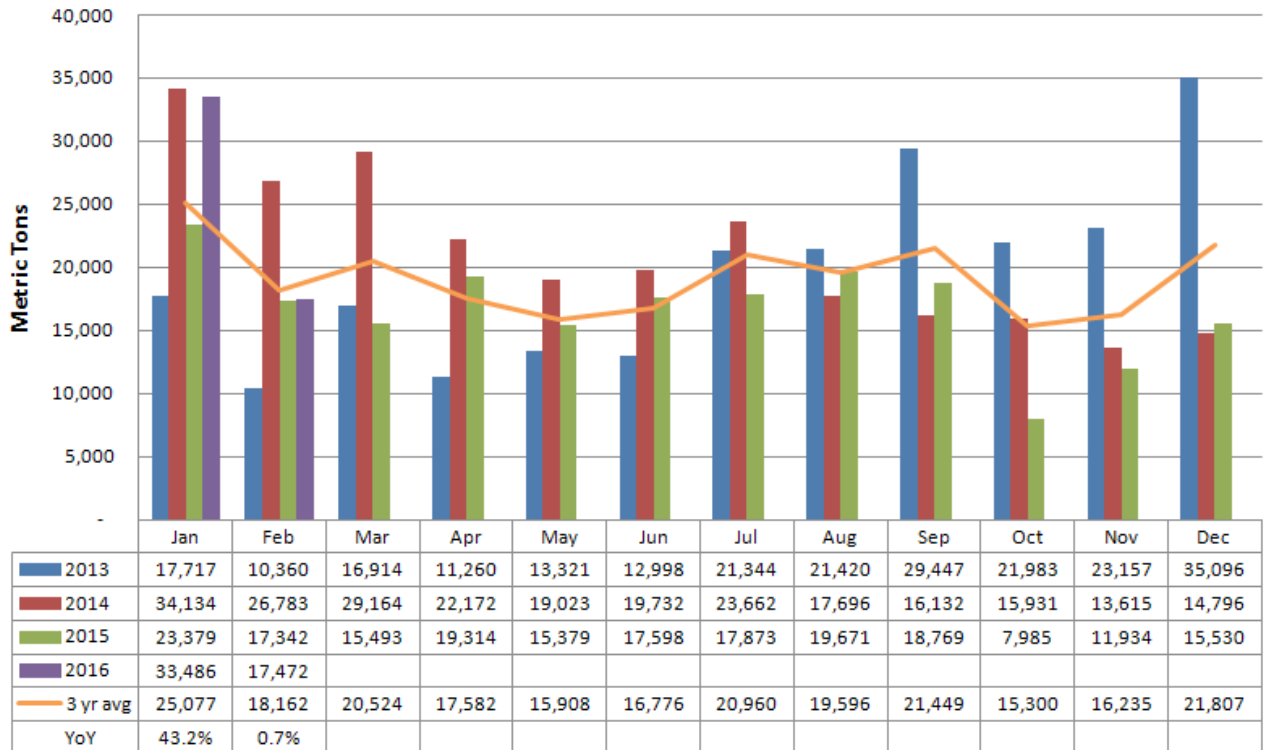
### MoM

- NZ: -13,001 MT, -51%
- US: -658 MT, -44%
- EU: -2,167 MT, -44%

## SMP Import Districts



## China Total SMP Import



# FEBRUARY CHINA WMP IMPORT

## WMP Highlights:

China imported 35,971 MT WMP in Feb, up -26.1% YOY.

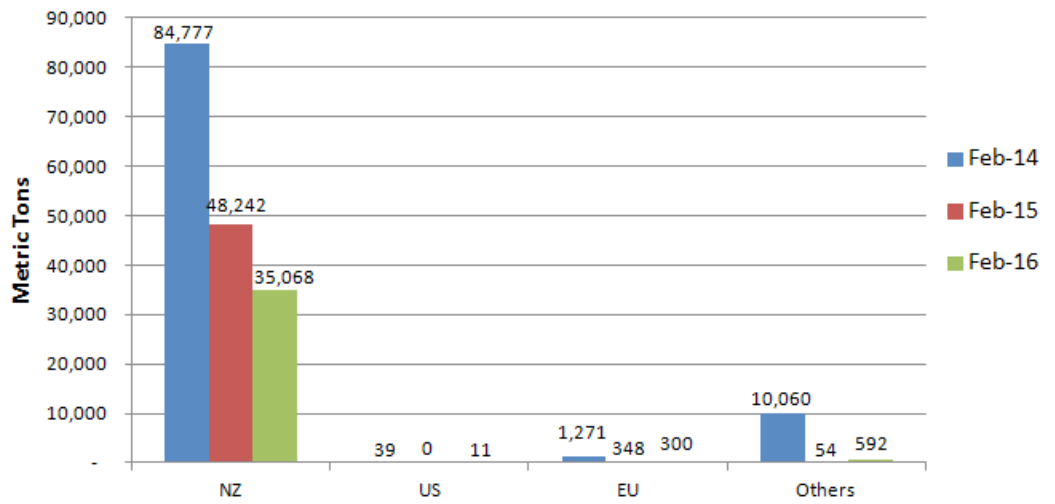
### YoY

• NZ: -13,174 MT, -27%

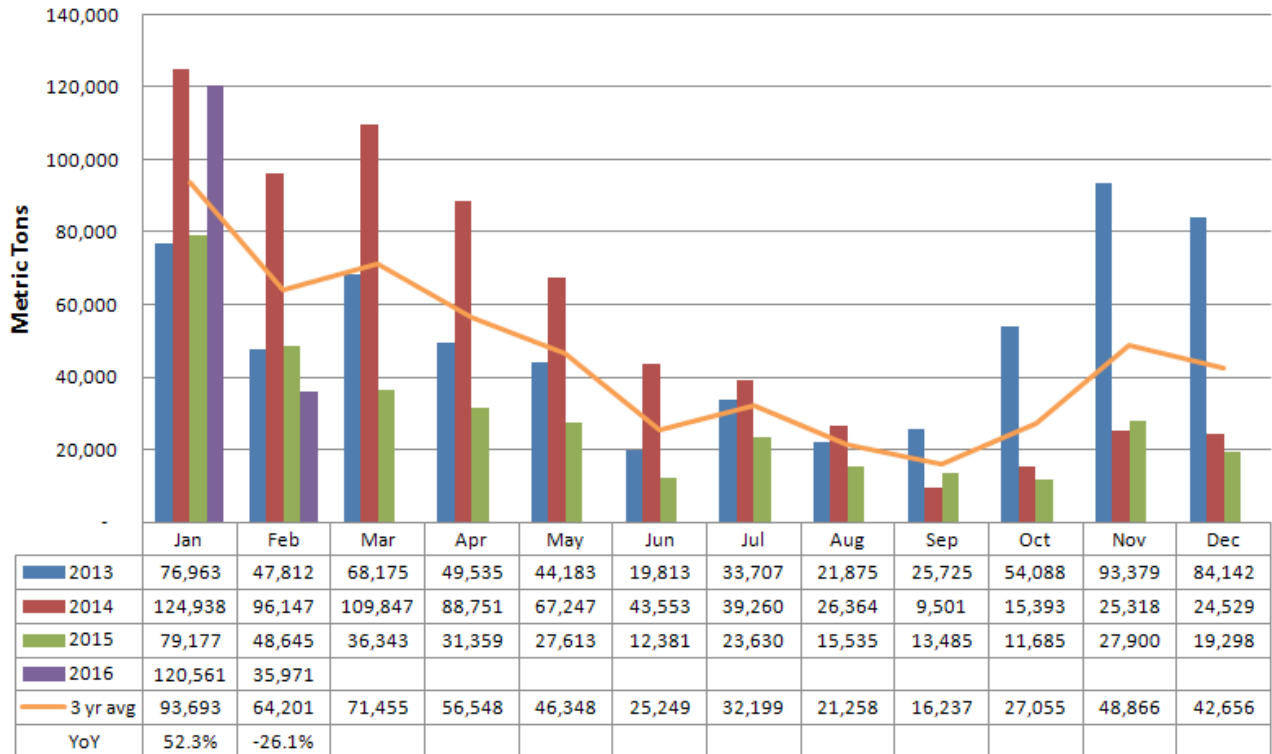
### MoM

• NZ: -83,654 MT, -70%

## WMP Import Districts



## China Total WMP Import



# JANUARY CHINA WHEY POWDER IMPORT

## Whey Highlights:

China imported 24,760 MT Whey Powder in Feb, up +18.5% YOY.

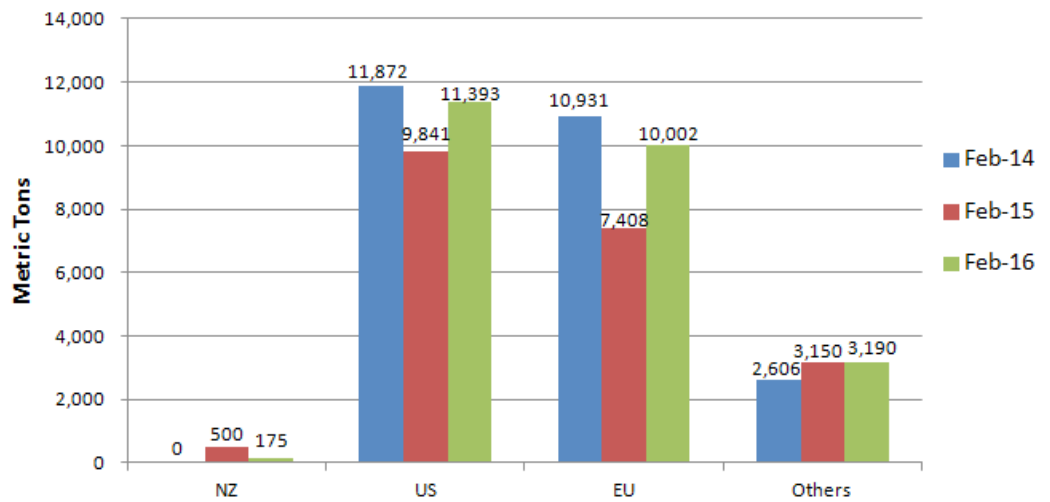
## YoY

- US: +1,552 MT, +16%
- EU: +2,595 MT, +35%

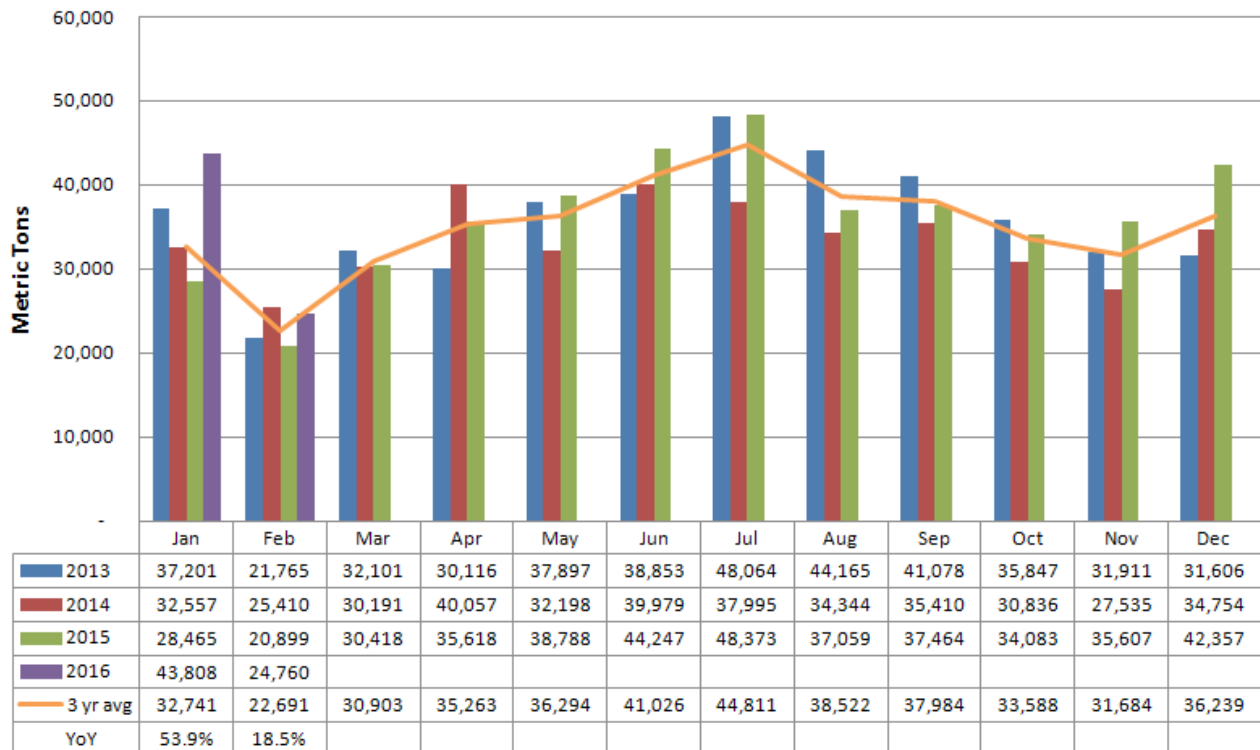
## MoM

- US: -9,982 MT, -47%
- EU: -5,659 MT, -36%

## Whey Powder Import Districts



## China Total Whey Powder Import



RICE DAIRY

China Dairy Data Report

# FEBRUARY CHINA CHEESE IMPORT

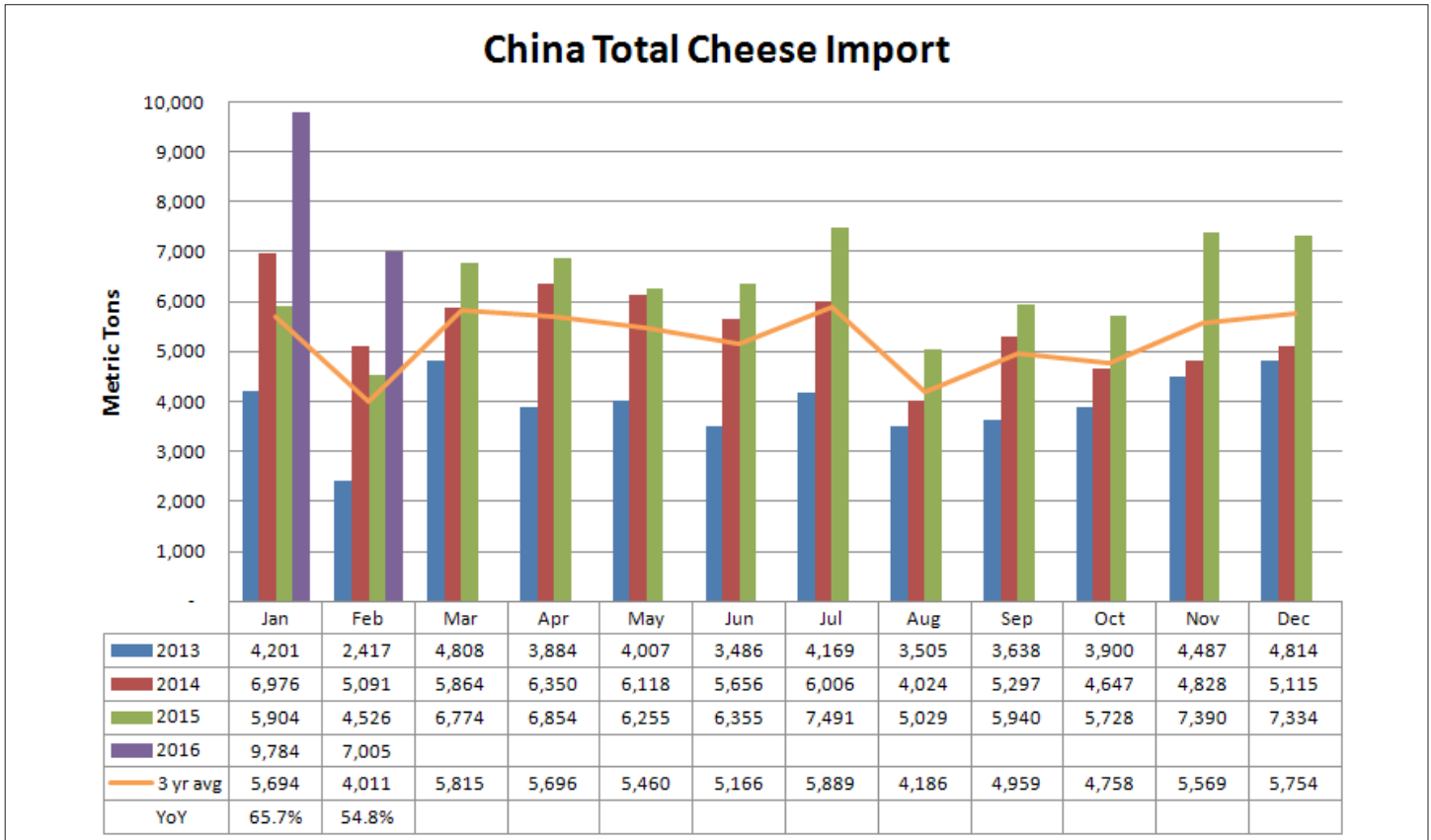
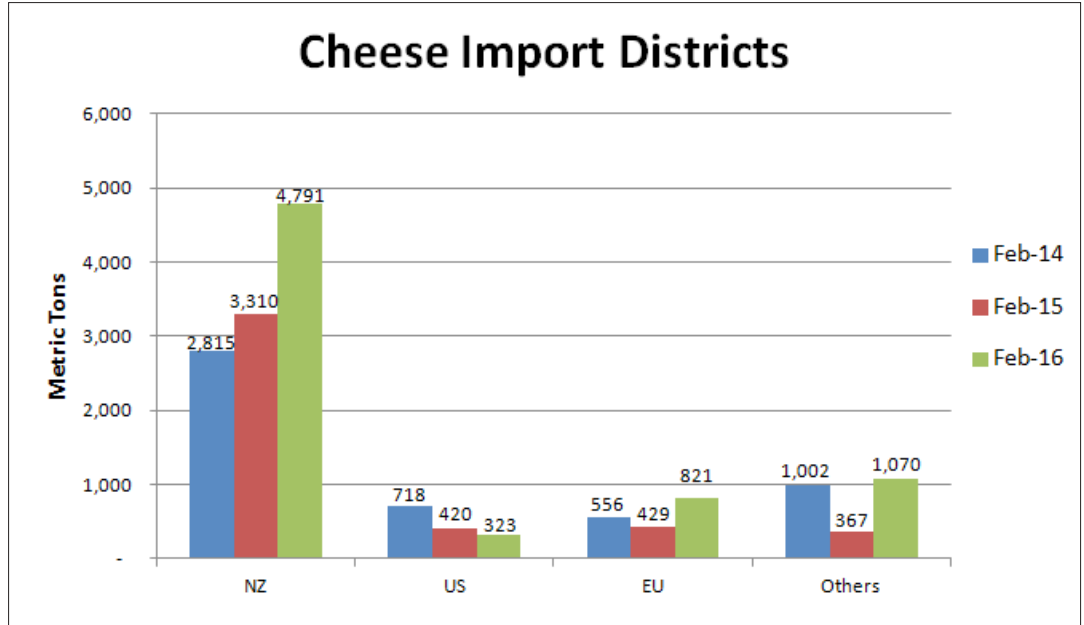
**Cheese Highlights:**  
 China imported 7,005 MT Cheese in Feb, up +54.8% YOY.

**YoY**

- NZ: +1,481 MT, +45%
- US: -98 MT, -23%
- EU: +392 MT, +92%

**MoM**

- NZ: -1,145 MT, -19%
- US: -425 MT, -57%
- EU: -463 MT, -36%



# FEBRUARY CHINA INFANT FORMULA IMPORT

## Infant Formula Highlights:

China imported 11,265 MT Infant Formula in Feb, up +37.7% YOY.

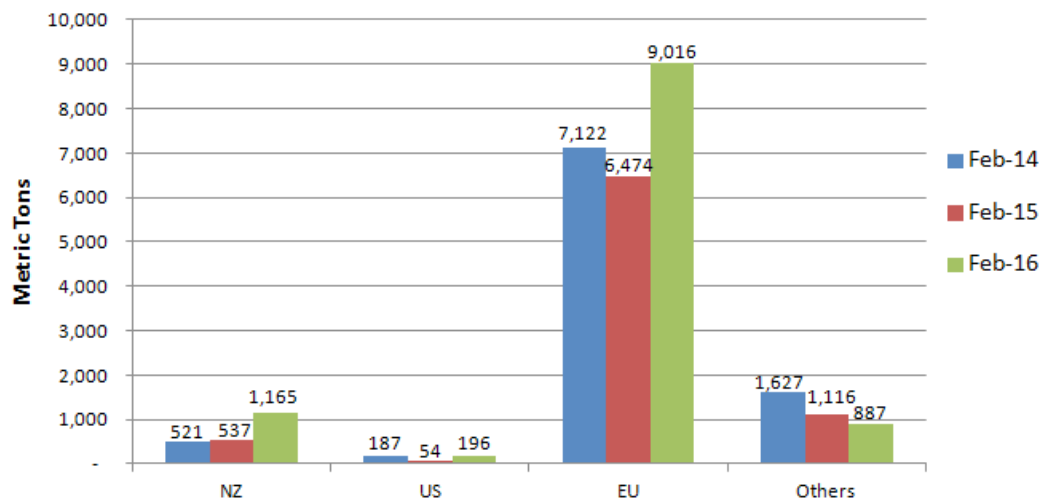
### YoY

- NZ: +628 MT, +117%
- US: +142 MT, +263%
- EU: +2,542 MT, +39%

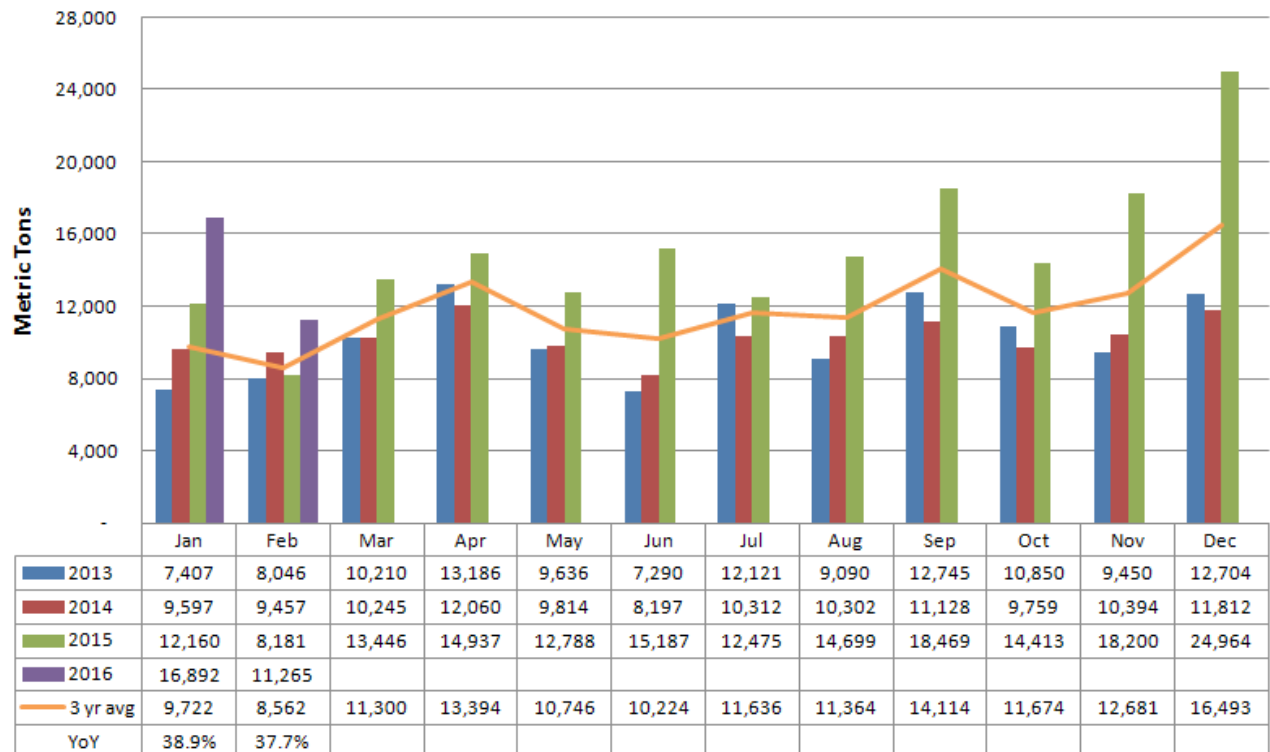
### MoM

- NZ: -600 MT, -34%
- US: -1 MT, -0.2%
- EU: -3,563 MT, -28%

## Infant Formula Import Districts



## China Total Infant Formula Import



Data for this report has been gathered from: [www.haiguan.info](http://www.haiguan.info), NBS and Rice Dairy LLC. The following HS codes were used to compile this report: SMP - 040210, WMP - 040221 and 040229, Whey Powder - 040410, Cheese - 0406 and Infant Formula - 190110.

INFORMATION CONTAINED HEREIN IN THIS REPORT IS COMPILED FOR THE CONVENIENCE OF THE USER. THIS IS INTENDED FOR INFORMATIONAL PURPOSES ONLY AND IS NOT TO BE CONSTRUED AS AN OFFER TO SELL OR A SOLICITATION TO BUY OR TRADE IN ANY COMMODITY OR SECURITY MENTIONED HEREIN. INFORMATION IS OBTAINED FROM SOURCES BELIEVED TO BE RELIABLE AND IS FURNISHED WITHOUT RESPONSIBILITY FOR ACCURACY OR CONTENT.